


6. Stator Replacement

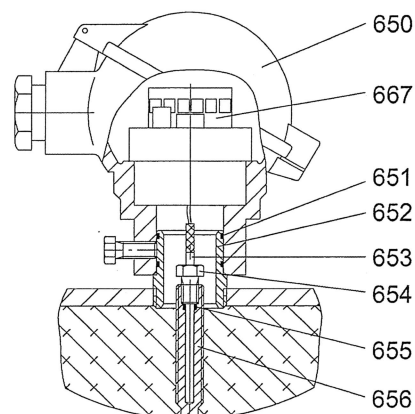
6.1 Ordering replacement stator

- Please note the following information when ordering a replacement stator for seepex pu
- Sensor sleeve is assembled in the factory and is ready for use; it may not be adjusted.


	NOTICE
	Stator with installed TSE sensor sleeve made of 1.4571
	If the pump is used with strongly corrosive media to which 1.4571 is not resistant, order sensor sleeve made of material 2.4610 (Hastelloy C4).

7. Dismantling / Reassembly of Connection Head and Temperature Sensor

Pos.	Denomination
650	Connection head
651	O-ring
652	Screw socket
653	Thermistor sensor
654	Clamping screw
655	Rubber ring
656	Sensor sleeve
667	Measuring transducer



7.1 Dismantling

	NOTICE
	➤ Do not re-use sensor sleeve after dismantling.

- Open cover of connection head.
- Loosen connection wires of the temperature sensor (terminals 3 and 4).
- After unscrewing the side screw pull the connection head off the screw socket.
- Twist screw socket out of the stator and remove the clamping screw, rubber ring and temperature sensor from the sensor sleeve.